

Statement

Thank you for purchasing our product! This user manual will help you get started with the basic features that our NVR Kit has to offer. This user manual may contain inaccurate content due to hardware and software upgrade. It is subject to change without prior notice.

User Information

- Please check carefully if all items are included in the package.
- Please use included power supply with the product to prevent damage.
- Please keep the NVR in good ventilated environment.
- Please avoid installing in severe vibration environments.
- Please use the product under its standard working temperature and humidity.
- Please make sure to turn off power of all items during installation. Check the voltage of the power supply carefully.

1 What's in the Box?

After receiving the product please check all products and accessories according to this packing list. Any missing or damaged items please contact the distributor.

Packing list

Item	Quantity
1080P NVR	1pc
1080p WiFi Camera	4/8pcs
12v/2A Power Supply for NVR	1pc
12V/1A Power Adaptor for IPC	4/8pcs
Screw Bag for IPC	4/8pcs
Screw Bag for NVR	1pc
CAT5 Cable	1pc
Mouse	1pc
HDD (Preinstalled)	1pc

Before Installation

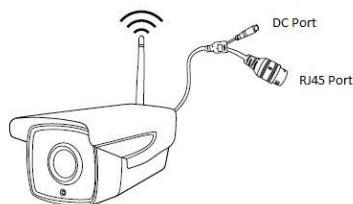
This product may require cabling, we suggest testing all products and parts first before installation and cabling.

NVR



1. Dual WiFi Antennas: WiFi range
2. WLAN Port: Connect your NVR to Internet
3. VGA Port: For viewing on VGA Monitor
4. HDMI Port: For viewing on HDTV
5. USB Port: For mouse and backup
6. Power Input

IP Camera

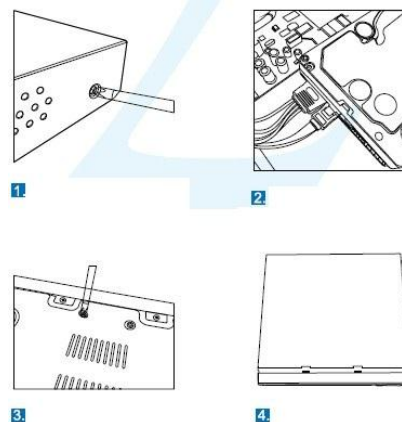


1. DC Port: Input power 12V 1A
2. RJ45 Port: For matching code and wired connection between IPC and NVR.

Our WiFi NVR Kit is already matched or Auto Paired before leaving factory. If users need to re-match code or use wired connection, please refer to how to add IP camera.

Hard Disk Drive (HDD)

Your NVR comes Pre-installed with Hard Disk Drive (HDD). Follow the steps if you want to remove or replace it in the future.



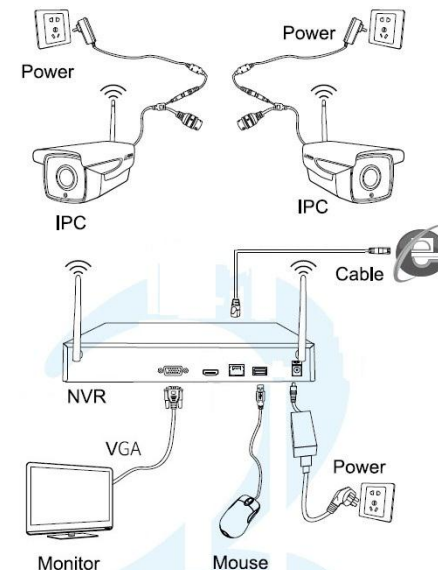
1. Turn off then unplug your NVR from power supply, unscrew and remove the top cover,
2. Disconnect/Connect the HDD power and data cables from NVR to the corresponding ports on you HDD.
3. Align the HDD to the chassis baseplate and fasten using the screws included.
4. Put the cover back and tighten the screws.

Back Panel Interface

Icon	Name
	DC Power Input
	Power Switch
	USB Interface
	Internet Interface
	VGA-OUT
	HD-OUT

2 Installation of WiFi NVR Kit

Wireless connection diagram



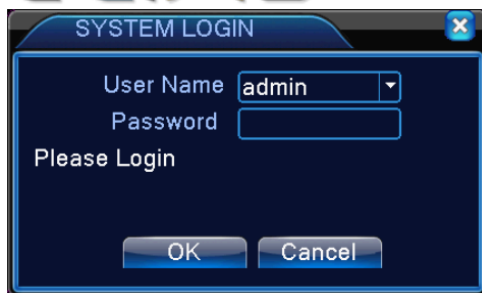
Note: Wireless NVR can't be connected to WiFi router wirelessly at present. They can be only connected by network cable.

3 Setup the System

This system is standalone with embedded Linux Operating System in the NVR. Just like a desktop PC, need to hook a screen to the NVR to enter the OS. Any TV, monitor with VGA or HDMI input should work for it.

1. Install antennas for the cameras and the NVR.
2. Connect a screen to the NVR via HDMI or VGA port (HDMI or VGA cable is not included).
3. Plug the NVR to power supply.
4. Within seconds you should see camera's images on the screen.
5. Plug the mouse to the USB port at the back of the NVR. You shall then be able to operate on the system

In the OS you can find fullest functionalities including live view, record, playback, video backup and all settings.



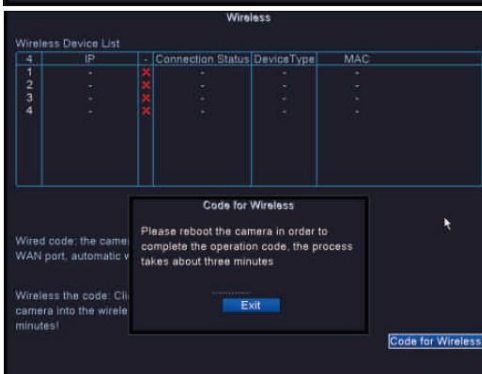
Default ID: Admin

Password: none (means leaving the password empty and just click login).

Tips: To protect your privacy please set your password at earliest convenience. Right click on the mouse > Go to System Setup > System Admin > User Management to set password.

How to add additional IP Camera or if there is no picture and need to re-match the code please complete pairing operation to add IP camera.

Click on **Code for Wireless**



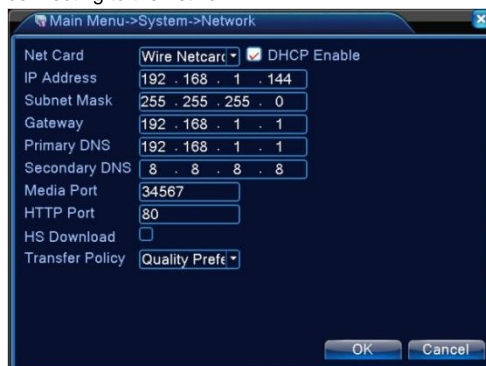
Make sure that the camera is connected to power supply and you need to wait for about three minutes. After adding IP Camera and displaying the image successfully the operation code for wireless is finished.



Note: You can also use code for wire according the system prompt. Disconnect the cable after displaying the image then the pairing is successful.

4 Connecting to the Network

Make sure to tick the DHCP Enable box to avoid error connecting to the network.



5 Record Video

Timing Record - Set time periods you want the NVR to record. Right click > System Setup > Record Plan, here you can setup periods you want the NVR to record. Everyday 0:00:00-23:59:59 means 24x7 recording. The system records 24x7 by default when it detects hard disk.

● **Manual Record** - The shortcut to turn on record Right click > Manual Record, you can turn ON or turn OFF the record of certain channels. Red dot on upper right corner means manual record is ON.

● **Motion Record** - Motion record means certain channels will be recorded only when movement is detected. Main Menu > Alarm > Motion Detect

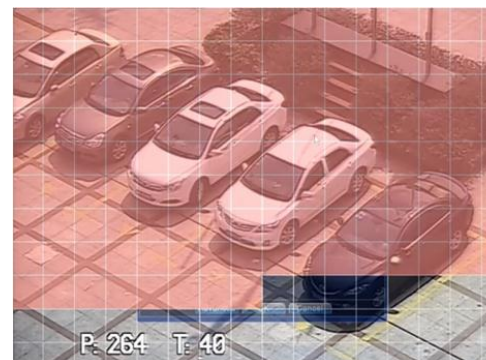
Motion Detection



Select the channel you are setting the parameters for. Make sure to tick the check box to enable motion detection function and set the desired sensitivity.

Click the boxes for Show Message, Buzzer, Send Email, Write Log and Mobile Report.

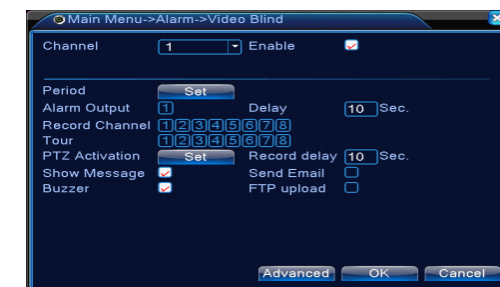
Click on Set Region button to specify an area which will be exclusively sensitive to motion.



Note: It is important to know that the areas marked by red box are sensitive to motion.

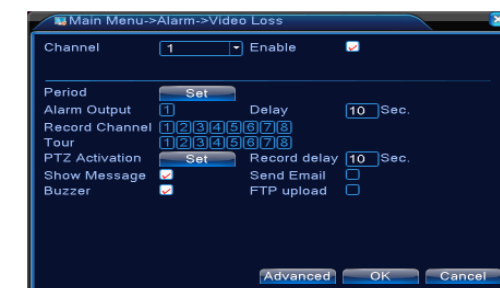
Video Blind

When the video image is influenced by the environment such as bad brightness or reaching the set sensitivity parameter, the video blind function is turned on and the linkage function is turned on. Main Menu > Alarm > Video Blind

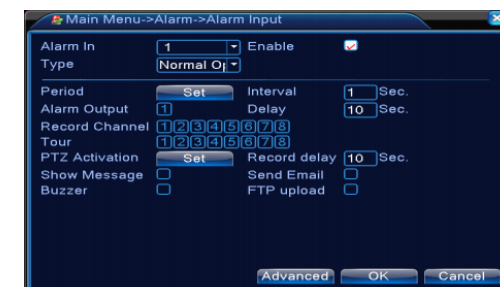


Video Loss

When the equipment cannot obtain the channel video signal, the video loss alarm is turned on and the linkage function is turned on

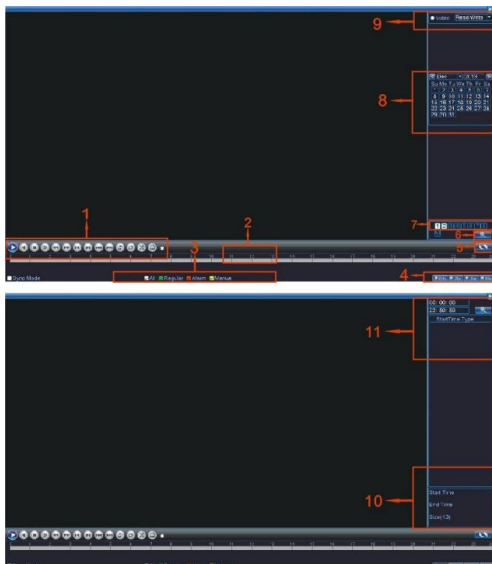


Alarm input



6 Video Playback on NVR

Video Playback - To view recorded files go to MENU select Playback and select the Camera Channel. Video Playback can be controlled through the playback progress bar. Click on the play icon, or fast forward, fast reverse etc.



1	Playback control
2	Operation hint
3	Record mode
4	Time interval choosing
5	Switch by time or file mode
6	File Search
7	Channel Selection
8	Calendar
9	Storage device
10	File information
11	Time Search

Playback Buttons

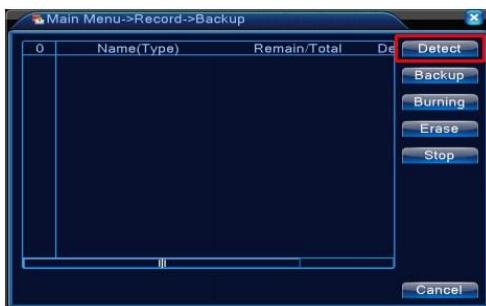
Button	Function	Button	Function
	Play/Pause		Backward play
	Slow forward		Fast forward
	Previous frame		Next frame
	Previous file		Next file
	Round play		Full screen
	Stop		

7 Video Backup

A built-in USB port gives you the option of backing up and transferring your video footage with a USB flash drive or external USB hard drive.

You can search video by Date, Time or Event. Simply choose the desired date and time range and the requested video clip will appear.

Main Menu > Record > Backup



1. After plugging a USB flash drive Click on Detect
2. Choose the date and time you want to backup the videos from
3. Click Backup format to select the file format of the video clips you are saving
4. Click Start

8 Internet Access

When your PC is in same LAN with the NVR (normally means they are connected to the same router) you can manage your manage you devices via Web browser.

And when your PC is out of local area network with the NVR (for example you want to view your home cameras from your office PC) you may use Cloud platform.

Web Browser

Find the IP address and port number of your NVR. System Setup > Network Setup

Enter the NVR's IP address in your web browser for example 192.168.1.9

Use the same user name and password to view and manage the device

Cloud Platform

Login cloud service website and go to www.xmeye.net. Complete the registration and landing cloud service account, you can add device to for remote management.

9 View on Mobile

XMeye is video surveillance software of mobile client which is developed for remotely monitoring. It works on IOS 8.1 or higher version and Android 4.1 or higher version.

Simply scan the code using your mobile.



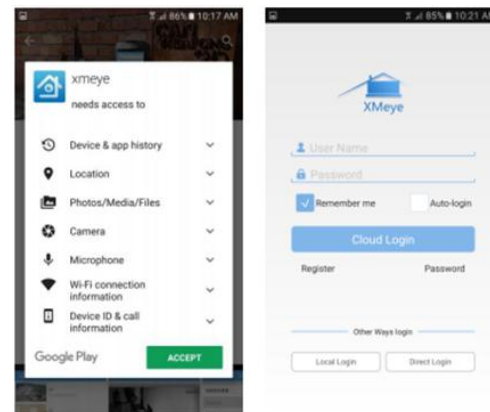
iOS



Android

This is a free application and there is no registration, monthly or annual fees to use this app.

You will now need to install the app and register. After installing accept access to the required areas.

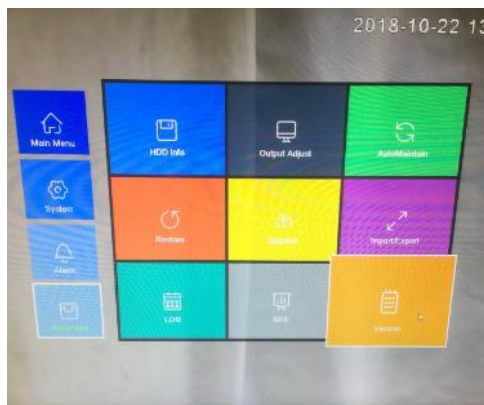


To add your device, click on the plus sign icon on the top right hand side.



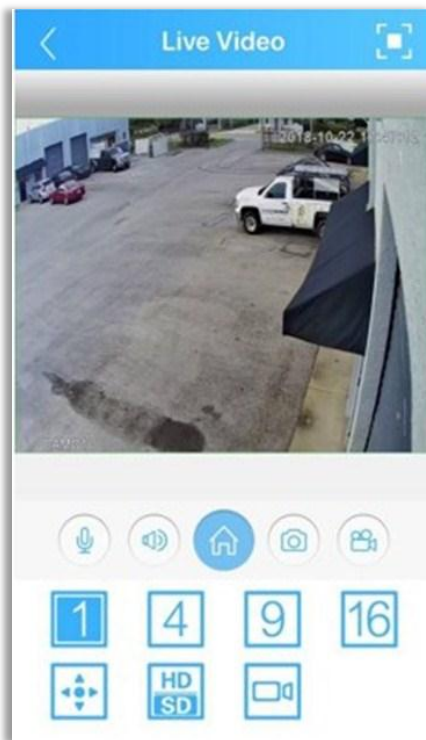
Set a name for the device and use the same password that was registered to your NVR system. Enter the NVR system serial number

NVR's Serial number can be found from Advanced > Version.



Live Video

Choose a device on the device list interface and click Start Preview to view live video.



Remote Playback

From the App you can view video file on the remote device. Select the time on the top right hand side and search. This allows you to Play/Stop, Audio, Snapshot and Record the video



Warranty Card

Warranty instruction: In warranty period of one year, if there is any breakdown which caused by the product own defect, please contact our company

To make a warranty claim, please email sales@elinz.com.au. For a prompt response, please ensure that you include all relevant purchase information and your contact phone number.

Warranty will not be given under the following circumstances:

Without valid warranty certificate or purchasing invoice or receipt.

The breakdown and damage caused by personal reasons, wrong usage and force majeure.

The breakdown and damage caused by maintenance[^] refit and dismantle movement of a non-our-company authorized maintainer. -Exceed the warranty period of our company's prescription.

Name: _____ Tel: _____
Address: _____
Dealer: _____ Contact Person: _____
Tel: _____ Date of Purchase: _____

If you have further questions or clarifications feel free to contact us at 1300 881 773, send us an email at sales@elinz.com.au or chat with us.

NVR Specifications	
Video input	8ch D1/960H720P/960P/1080P
HDMI Output	1ch , Resolution : 1024x768, 1280x1024,1366x768, 1440x900, 1920x1080
VGA Output	1ch , Resolution : 1024x768, 1280x1024,1366x768, 1440x900, 1920x1080
Resolution	D1/960H/720P/960P/1080P
Playback	8ch
Recording	Manual,time,motion detection,alarm
Storage	1 SATA
Storage capacity	6TB for each HDD
Network interface	1 RJ45 10M/100M , 2 WIFI connector
USB interface	1 USB 2.0
Audio interface	3.5 mm headphone jack (Optional)
Power consumption	≤5W
Power	DC12V
Working temperature	-10 °C -- + 55 °C
Dimension	258*210*42mm
Working humidity	10 % --90 % R

Camera Specifications	
Resolution	2.0MP (1920*1080P)
Sensor	1/3" SONY CMOS Sensor with ICR
Compression standard	H.265
IR-Cut	Built-in IR Cut.No color deviation indoor and outdoor
Lens Mount	3.6mm Board Lens
Image Frame Rate	30fps maximum,downward adjustable
Night Vision	36pcs IR LEDs, IP distance up to 20 meters
Product Type	Waterproof Outdoor IP Camera
Waterproof	IP66
Wireless	IEEE 802.11 b/g/n,Security supports WEP,WPA&WPA2 Encryption
Onvif Protocol	Supports NVR real time monitoring,recording and playback
Motion Detection	Yes
Alarm Setting	Supports Email, Phone push
Alarm recording	Yes
Recording mode	Manual Record,Alarm Record,Timing Record
Video View	Support Remote video playback
For Phone	Support IOS and Android Device or Tablet PCs